

Life Is On

Schneider
Electric

Efficiency that clicks.



Compact NSXm molded case circuit breakers

Schneider Electric introduces a new family member of the Compact™ NSX range of circuit breakers, the Compact NSXm.

The Compact NSX and NSXm ranges benefit from 60 years of Schneider Electric background and leadership in industrial circuit breakers based on the roto-active breaking technology.

As well as offering proven performance, flexibility, and reliability, the Compact NSXm features new innovations such as EverLink™ patented connections and embedded earth leakage protection.*

Compact NSXm

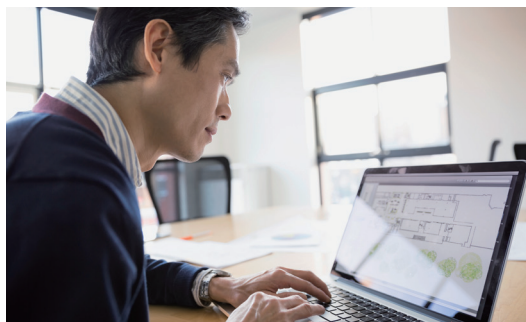


*Available in Q4 2017

schneider-electric.com/compactNSXm



Your efficiency is our first concern.



I design electrical solutions.

Win more projects and deliver the best solution for your customers.

- Ensure reliable connection over time using creep-compensating technology — EverLink
- Enhance power availability with outstanding discrimination
- Optimize panel cost with cascading
- Benefit from our customer support to help design the best solution for your customers



Equipment with Compact NSXm is tested and complies with IEC 61439 1&2.

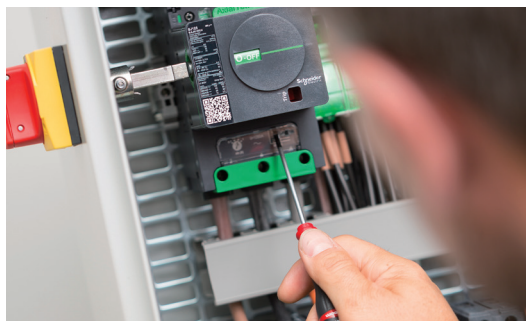


I build and install electrical equipment.

Make your business more profitable.

- Save up to 40% of time spent mounting and cabling with built-in DIN rail, EverLink connectors, and spring-type auxiliaries
- Gain up to 40% of space when using the new earth leakage circuit breakers*
- Easy to select with new Schneider Electric™ online tools

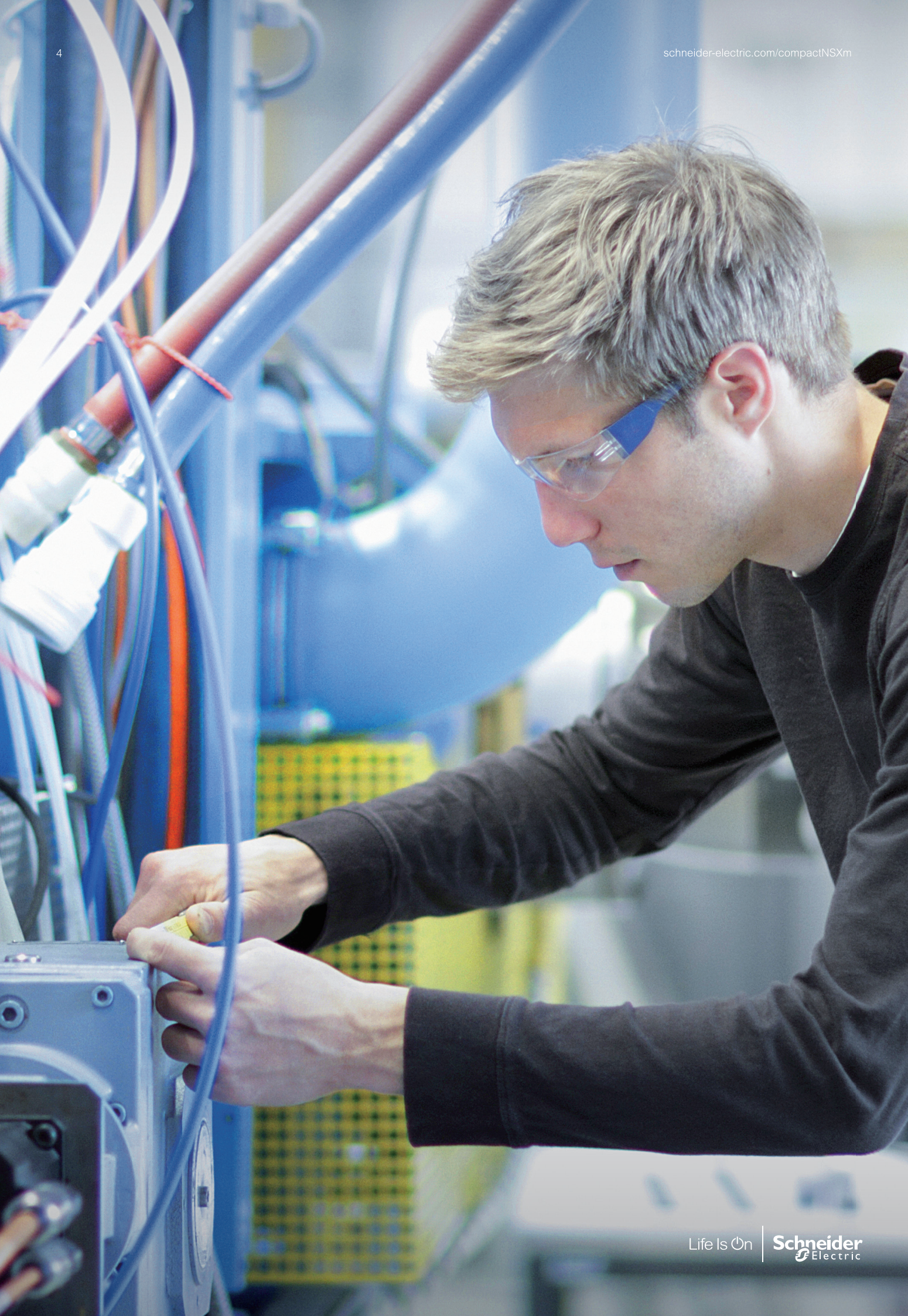
* Available in Q4 2017



I design and build machines.

Optimize your solution.

- Best combination of size and performance
- Same footprint, accessories, and auxiliaries for both IEC and multistandard (UL/IEC) range
- Benefit from working with one single worldwide equipment provider (Compact™, TeSys™, Altivar™, Modicon™, etc.)



Compact NSXm circuit breakers: Optimized for your needs

The Compact NSXm range of circuit breakers and switch disconnectors is a newcomer in the Compact NSX family. It is one of the smallest on the market with innovative features. Built on the design of roto-active breaking technology, we have made it as robust as Compact NSX products.

Compact NSXm main features and innovations

- Up to 160 A and 70 kA at 415V
- Thermal magnetic trip unit integrated
- Built-in DIN rail and plate mount
- Auxiliaries externally visible
- EverLink connectors

Earth leakage protection embedded (VIGI)

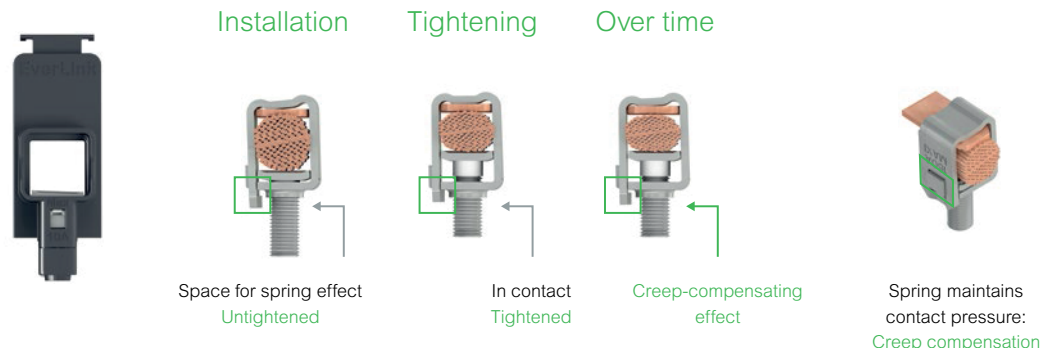
- Save up to 40% of space with the smallest earth leakage circuit breaker
- Save time; no need to order or install an add-on block



EverLink patented technology

The Compact NSXm features a new cable connection method with patented creep-compensating technology built directly into the terminal — EverLink:

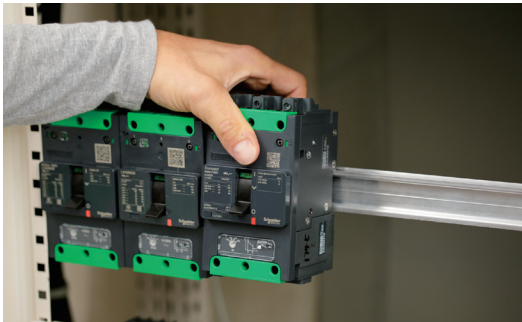
- With EverLink connectors, save space and time during panel assembly.
- Bare cable connections are as safe as compression lug ones.



More than 35 patents have been registered for this new Compact NSXm offer.

Efficiency that clicks.

Compact NSXm accessories are available to answer all your needs from power connection to operating mechanism, including electrical auxiliaries. All of them are easily field installable.



Mounting: DIN rail and plate

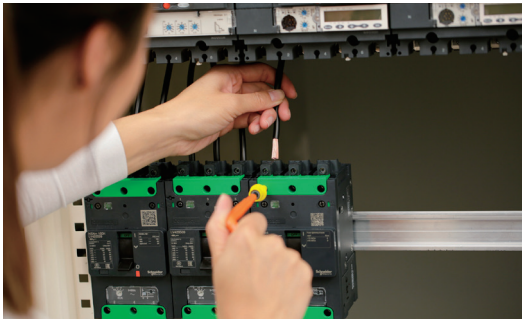
Embedded DIN rail and plate mounting capabilities for every circuit breaker; no extra parts required.



Auxiliaries: Field-installable offer

All electrical auxiliaries (contacts OF/SD and voltage release MN/MX) can be easily installed in the product by simply opening the front cover and snapping them into cavities.

Their presence in the breaker is externally visible through flags or a window.



Power connection: Flexible

Compact NSXm circuit breakers come with EverLink or compression lug or busbar connector. As an option, you can get EverLink connectors with control wire terminal.

New torque-limiting breakaway bits can be used to tighten power connections in the field.



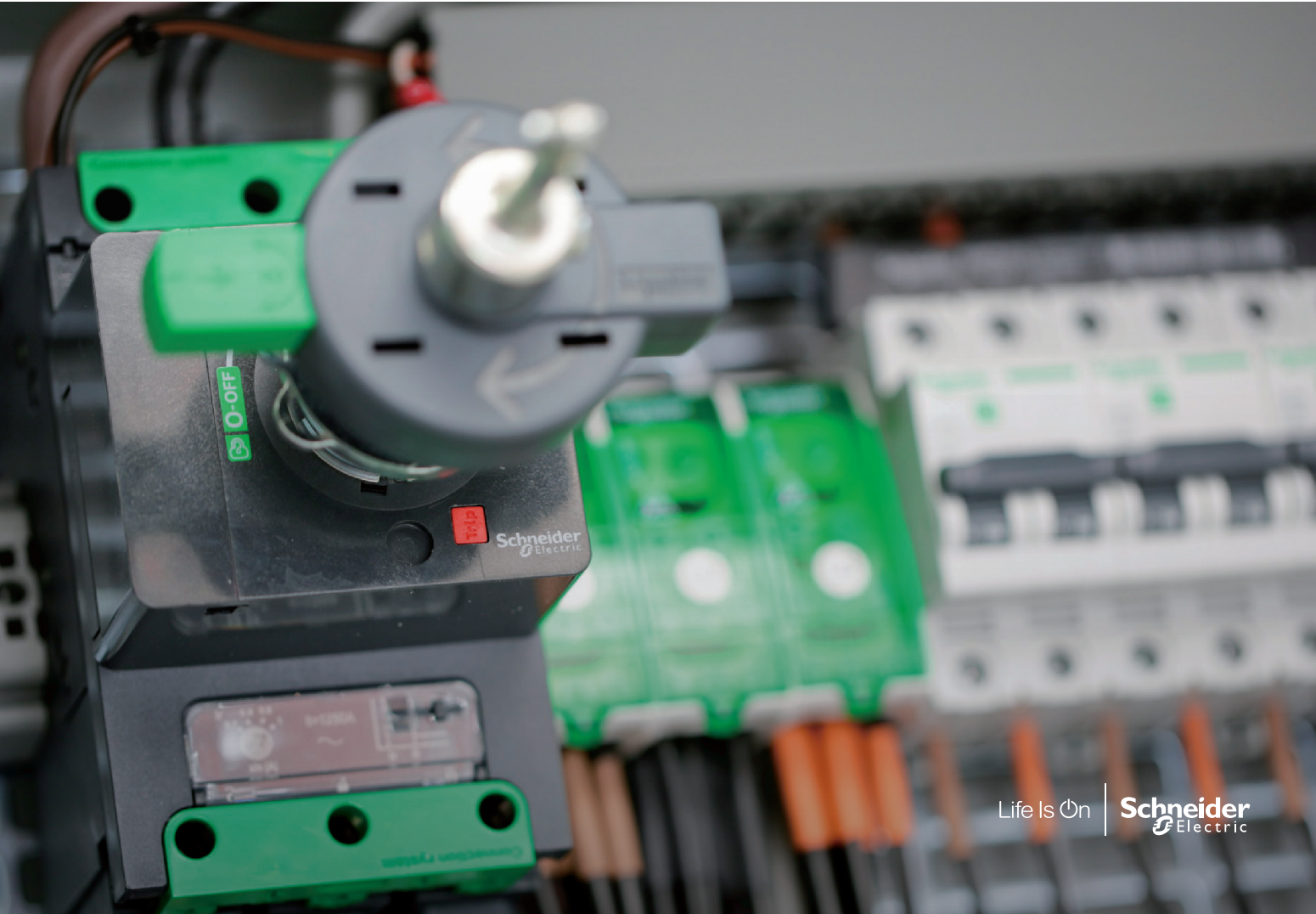
Insulation

New transparent long terminal shield can allow you to achieve IP40.



A wide range of operating mechanism

A wide range of rotary handles enables the Compact NSXm to meet all standards and applications. They are available as direct, extended, and side mount. We also feature an open door shaft operator (NFPA79 code), which allows you to operate the breaker safely when the panel door is open.





Compact NSXm circuit breakers: Select and order

1 Design

Ecodial software

Single-line diagram design software that calculates and sizes your electric installation.

Ecoreal software

Quick configuration and quotation tool for switchboards.

2 Configure and order

MyPact

Configure and order Compact NSXm to save time and ensure accuracy.
config.schneider-electric.com

3 Build

Build faster

One-click installation and flexibility with field-installable accessories and auxiliaries.

4 Operate and maintain

Get quick access to product information

Auxiliaries are externally visible. QR code provides easy access to information on the product and quick access to the customer care center.

Ensure continuity of service

With EverLink, no need for periodic retightening of terminals.







Green Premium

Endorsing the most eco-friendly products in the industry.

The Schneider Electric Green Premium™ ecolabel is committed to offering transparency by disclosing extensive and reliable information related to the environmental impact of its products.

RoHS

Schneider Electric products are subject to RoHS requirements at a worldwide level, even for the many products that are not required to comply with the terms of the regulation. Compliance certificates are available for products that fulfill the criteria of this European initiative, which aims to eliminate hazardous substances.

REACH

Schneider Electric applies the strict REACH regulation on its products at a worldwide level and discloses extensive information concerning the presence of Substances of Very High Concern (SVHC) in all of these products.

PEP

Schneider Electric publishes the most complete set of environmental data, including carbon footprint and energy consumption data for each of the life cycle phases on all of its products in compliance with the ISO 14025 Product Environmental Profile (PEP) ecopassport program. The PEP is especially useful for monitoring, controlling, saving energy, and/or reducing carbon emissions.

EoLI

Available at the click of a button, End of Life Instructions (EoLI) provide:

- Recyclability rates for Schneider Electric products
- Guidance to mitigate personnel hazards during the dismantling of products and before recycling operations
- Parts identification for recycling or selective treatment to mitigate environmental hazards/incompatibility with standard recycling processes

Green Premium is the only label that allows you to effectively develop and promote an environmental policy while preserving your business efficiency. This ecolabel guarantees compliance with the most up-to-date environmental regulations, but it does more than this.

75%

Over 75% of Schneider Electric manufactured products have been awarded the Green Premium ecolabel.



Discover what we mean by green
[Check your products!](#)



Schneider Electric

Head Office
35 rue Joseph Monier
92500 Rueil Malmaison Cedex- France
Tel.: +33 (0)1 41 29 70 00

www.schneider-electric.com

August 2016

©2016 Schneider Electric. All Rights Reserved. Schneider Electric | Life Is On is a trademark and the property of Schneider Electric SE, its subsidiaries, and affiliated companies.
998-19718409_GMA-US

This document has been
printed on recycled paper

