

545D6102

545D0102



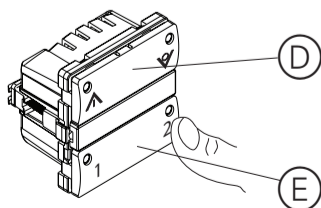
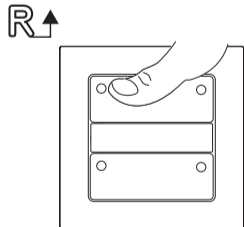
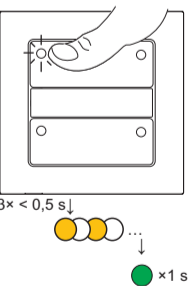
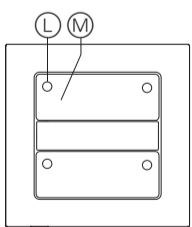
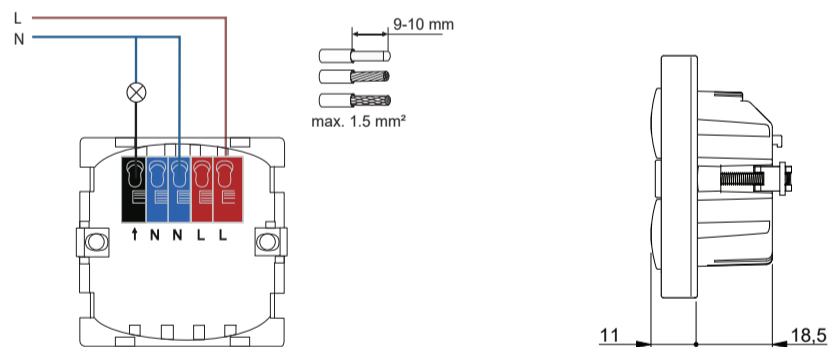
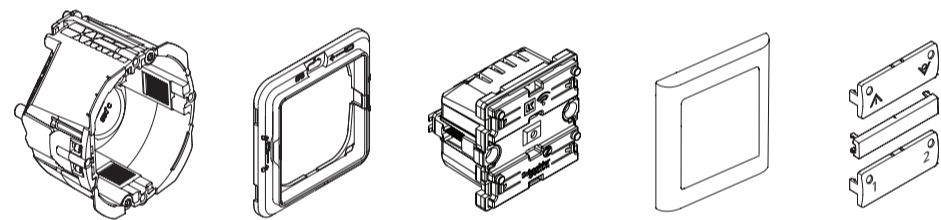
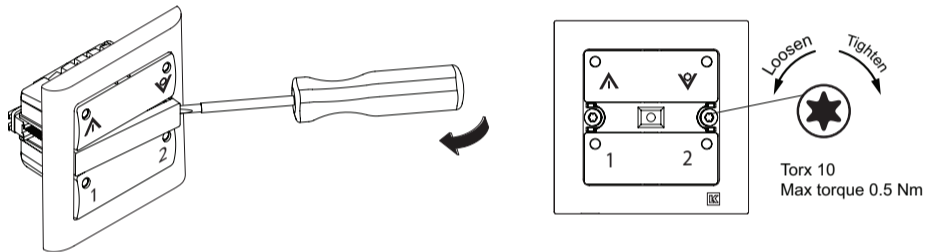
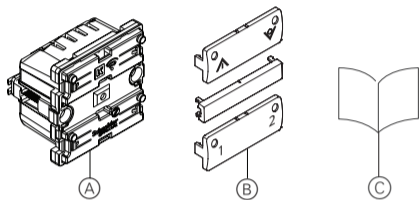
Wiser



	1-130 VA	▲RC
	1-30 VA	▲RL
	1-250 W	▲R
	1-70 VA	▲L (*)

	1-230 W	▲R
	1-200 VA	▲C

(\*) Only transformer intended to be used with a dimmer shall be used.



- ▲ = S1 (Default: )  
 ▼ = S2 (Default: )
- 1 = S1 (Default: )  
 2 = S2 (Default: )

## Necessary accessories

- A complete installation requires
- Design frame and possibly a technical frame.
- Rockers and center cover if 545D0102.

## Prerequisites

Download the **Wiser app** to your smartphone/tablet and install the **Wiser Gateway** to configure and control Wiser devices.

## Additional system information

Detailed product information is available online in the **system user guide**: Scan the QR code or follow the link.


<https://www1.lk.dk/wiser>

## For your safety

## ⚠ DANGER

## HAZARD OF ELECTRIC SHOCK, EXPLOSION, OR ARC FLASH

Safe electrical installation must be carried out only by skilled professionals. Skilled professionals must prove profound knowledge in the following areas:

- Connecting to installation networks
- Connecting several electrical devices
- Laying electric cables
- Safety standards, local wiring rules and regulations

**Failure to follow these instructions will result in death or serious injury.**

## ⚠ DANGER

## RISK OF FATAL INJURY FROM ELECTRIC SHOCK

The output may carry electrical current even when the load is switched off.

- Disconnect the device from the supply by means of the fuse in the incoming circuit before working on the device.

**Failure to follow these instructions will result in death or serious injury.**

## Getting to know the product

The LK FUGA® Wiser wireless dimmer (hereinafter referred to as the **device**) is a dimmer that can be operated locally at the associated operating panel. The dimmer output can be controlled from other Wiser devices.

By default, the switch panel controls the output. The upper rocker is used for ON / dim up (left side) and OFF / dim down (right side). The bottom rocker are scenarios S1 and S2. S1 is preconfigured as ON and S2 as OFF. This can be changed via the Wiser app (requires Gateway) by the user to save brightness level of the dimmer.

**i** If LED bulb is used the dimming result will be depending on the LED connected. Some LED's will not work properly. This depends on number of LED's, the quality of the driver and the power of network it is supplied from.

## Control options

- Home control:** To control the device through the Wiser app you will need the Wiser Gateway.
- Room control:** To control the device with other Wiser devices, it can be paired with other Wiser devices within the same Zigbee network.
- Direct operation:** The device can always be controlled directly on-site.

## Functions

- Switch between RC and RL mode.
- Thermal protection, overload-resistant, short-circuit protection
- Soft start

## Via app:

- Setting the switch-on brightness or memory function
- Dimming range: Min./max. brightness
- Setting dimmer mode to RC or RL mode (default RC mode).
- Setting a timer or a time schedule

## Package contents

- (A) LK FUGA® Wiser wireless dimmer
- (B) Rockers and center cover (not included for 545D0102).
- (C) Installation guide.

## Mounting options

The device must be mounted in LK FUGA® installation boxes or LK FUGA® surface installation boxes. The device size is 1 module.

## Mounting the device

## ⚠ CAUTION

The device may be damaged!

- Always operate the product in compliance with the specified technical data.
- Never connect any mixed inductive/capacitive loads.
- Only connect dimmable loads.
- Danger of overload! Dimming socket outlets is prohibited.

**Failure to follow these instruction can result in equipment damage.**

## Connecting the device



## Operating elements

- (L) Status LED
- (M) Setup/Reset (the button under the center cover bar has the same function).

## Setting the device

## Switch between RC and RL mode

Press 14 short-clicks on the setup button (top left). LED then lights up green for RC mode and blue for RL mode. Factory setting is RC mode.

## Connecting to the Wiser Gateway

Short press (< 0,5 s) the Setup/Reset button 3 times to connect to an available Zigbee network. The status LED blinks amber and then turns green upon successful connection to the Zigbee network.

For more information refer to the system user guide.

## Pairing to other Wiser devices

To control products in a room control mode, it can be paired with other Wiser devices within the same Zigbee network.

## Resetting the device

Short press (< 0,5 s) the Setup/Reset button 3 times and then long press (>10 s) the Setup/Reset button once to reset the device to factory default mode.

The status LED blinks red and then turns red upon successful reset of the device.

**i** After the device is reset all the programming and network data will be deleted.

## Operating

- (D) On/adjust up (left) and off/adjust down (right).
- (E) Scenarios. Default: 1 = on, 2 = off.

You can remotely control the unit via the Wiser app (requires Wiser Gateway).

## Behaviour of the status LED

Refer to the system user guide.

## Troubleshooting

Refer to the system user guide.

## Technical data

<b>Rated Operational Voltage</b>	230 V AC 50 Hz
<b>Nominal power</b>	
<b>Standby Consumption</b>	Max. 0.4 W
<b>Associated Fuse Rating</b>	13 A
<b>Protection Type</b>	Overheating Protection Short-circuit Protection
<b>Operation</b>	Local Control 4 pushbuttons Remote control by auxiliary push-button Zigbee 3.0
<b>Local Signaling</b>	4 LED
<b>Time Delay Range</b>	1 Second to 24 Hour
<b>Connection</b>	Line, Neutral, Load
<b>Terminals</b>	Screwless terminals 2x1.5 mm <sup>2</sup> (N) 2x1.5 mm <sup>2</sup> (L) 1x1.5 mm <sup>2</sup> (Load) Wire: 1,5 mm <sup>2</sup> solid, stranded or multi-stranded. One wire per. hole.
<b>Operating Temperature</b>	-5 to +40°C
<b>Operating Humidity</b>	10% - 95% RH, Non-condensing
<b>Module size</b>	1M
<b>Operating frequency</b>	2.4 GHz
<b>Max. radiofrequency power transmitted</b>	<10 mW
<b>IP Degree of Protection</b>	IP20
<b>IK Degree of Protection</b>	IK04
<b>Environmental Disclosure</b>	Reach, RoHS, WEEE, Green Premium
<b>EU declaration</b>	WD20061102
<b>Product Certifications</b>	Zigbee 3.0

Dispose of the device separately from household waste at an official collection point. Professional recycling protects people and the environment against potential negative effects.

## Trademarks

- Wiser™ is a trademark and the property of Schneider Electric SE, its subsidiaries and affiliated companies.
  - Zigbee® is a registered trademark of the Zigbee Alliance.
  - Apple® and App Store® are brand names or registered trademarks of Apple Inc.
  - Google Play™ Store and Android™ are brand names or registered trademarks of Google Inc.
- Other brands and registered trademarks are properties of their relevant owners.

## EU Declaration of conformity

Hereby, Schneider Electric Denmark A/S, declares that this product is in compliance with the essential requirements and other relevant provisions of RADIO EQUIPMENT DIRECTIVE 2014/53/EU. Declaration of conformity can be downloaded on: [se.com/docs](http://se.com/docs).

## Lauritz Knudsen

Schneider Electric Denmark A/S, Lautrupvang 1, 2750 Ballerup, Phone: +45 88 30 20 00, [www.lk.dk](http://www.lk.dk)